



**Multiplayer**

**Settings**

**English**

**Version 1.2**

## Content

|  |           |
|--|-----------|
| <b>1. Settings (Web Racing settings) .....</b>     | <b>3</b>  |
| <b>1.1 General - Firewall settings .....</b>       | <b>3</b>  |
| <b>1.2 Windows XP Firewall Settings .....</b>      | <b>4</b>  |
| <b>1.3 Windows Vista – Firewall settings .....</b> | <b>5</b>  |
| <b>2. Router Settings .....</b>                    | <b>6</b>  |
| <b>2.1 What is a Router .....</b>                  | <b>6</b>  |
| <b>2.2 Changing settings to the Router.....</b>    | <b>7</b>  |
| <b>3. Start a Server .....</b>                     | <b>9</b>  |
| <b>4. Settings for LAN Racing.....</b>             | <b>11</b> |
| <b>4.1 Firewall settings.....</b>                  | <b>11</b> |
| <b>4.2 IP settings on the PC (XP version).....</b> | <b>11</b> |
| <b>4.3 Important.....</b>                          | <b>14</b> |

## 1. Settings (Web Racing settings)

Before you use the Multiplayer for the first time, you need to change some the setting on your PC. This document has been designed to ensure you have all the details that you need to ensure your Multiplayer will work. In some cases the Fortius Software will automatically adjust the Windows Firewall settings, so that you do not need to perform these actions. However we advise you to follow below instructions.

These settings are mandatory before you start the Fortius Multiplayer Software (can also be used for the i-Magic trainer) to Join a server or to Start a server.



### 1.1 General - Firewall settings

To prevent the Firewall from blocking the communication of the Fortius Software for “*Join a server*” and for “*Start a server*”, it is essential that you open program’s within the *Firewall* application to ensure the Multiplayer (online cycling) works correctly.

For the Fortius Multiplayer software the following programs will communicate with other riders over the internet.

|                             |                                      |
|-----------------------------|--------------------------------------|
| <b>Fortius.exe</b>          | for the Menu's                       |
| <b>VR_Fortius.exe</b>       | for the Virtual Reality              |
| <b>Catalyst_Fortius.exe</b> | for the Real Live Video and Catalyst |

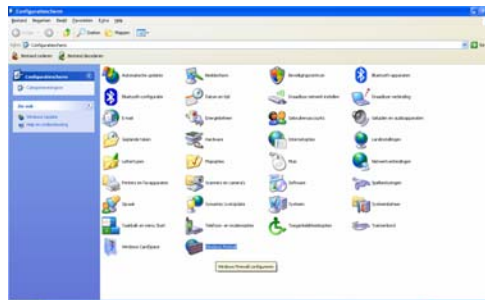
In the following pages we will explain how you can allow these three programs to be accepted by the Firewall.

**You need to follow the same procedure with other Firewalls (like Norton or McAfee).**

## 1.2 Windows XP Firewall Settings

Follow the instructions below.  
Go to:

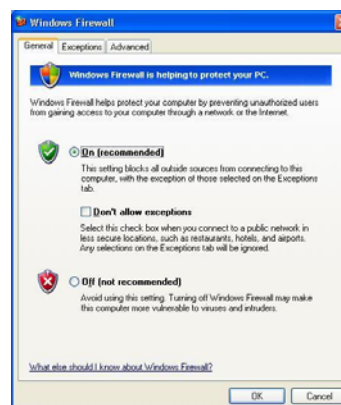
- **Start**
- **Settings**
- **Configuration**
- **Windows Firewall**



Open the *Windows Firewall*.

You will see three different Tab pages

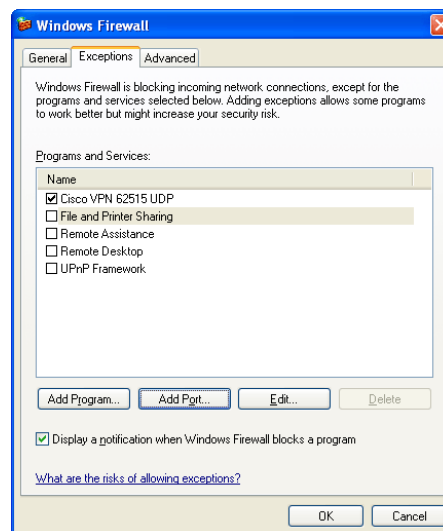
*General / Exceptions / Advanced*



Select: **Exceptions**

Then Select:

- **Add Program**
- **Browse**



Now add the following programs (and repeat the above steps for each program)

**C:\Program files\Tacx Fortius\Fortius.exe**

**C:\Program files\Tacx Fortius\i-magic\VR\_Fortius.exe**

**C:\Program files\Tacx Fortius\i-magic\Catalyst\Catalyst\_Fortius.exe**

After this, close all the programs

*Remark 1: It is possible that during the start of the Fortius Program, a message appears from the Firewall. You can choose 3 options (block, accept, ignore). Always choose **accept**. You do need to close the Fortius Program first.*

*Remark 2: It is also possible to close the Firewall. This is not wise if you are connected constantly to the internet. If you do not have any internet connection, and use only LAN, then it is not a big problem to close the windows Firewall (or any other Firewall).*

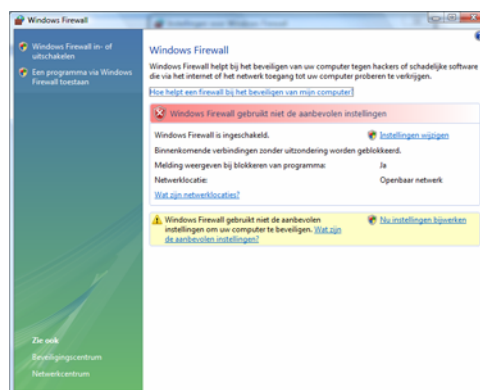
### 1.3 Windows Vista – Firewall settings

Follow the instructions below.  
Go to

- **Start**
- **Configuration**
- **Windows Firewall**



Open the *Windows Firewall*.



Select: *Add a Program to Windows Firewall*

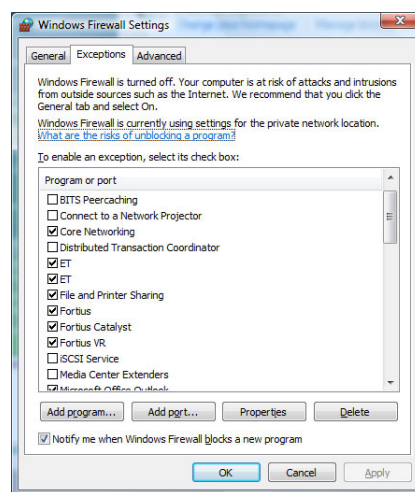
You will see three different Tab pages

*General / Exceptions / Advanced*

Select: **Exceptions**

Select:

- **Add a Program**
- **Browse**



Now add the following programs (and repeat the above steps for each program)

**C:\Program files\Tacx Fortius\Fortius.exe**

**C:\Program files\Tacx Fortius\i-magic\Fortius.exe**

**C:\Program files\Tacx Fortius\i-magic\Catalyst\Catalyst\_Fortius.exe**

Remark 1: When you specify a different location during the Fortius installation, you must choose this drive (example: D drive in stead of C Drive).

## 2. Router Settings

### 2.1 What is a Router

In most circumstance the router (modem or modem router) is delivered together with you Internet Provider. In some cases this is called modem or modem router. The router is responsible for the communication between your PC and the Internet or a PC in a network.

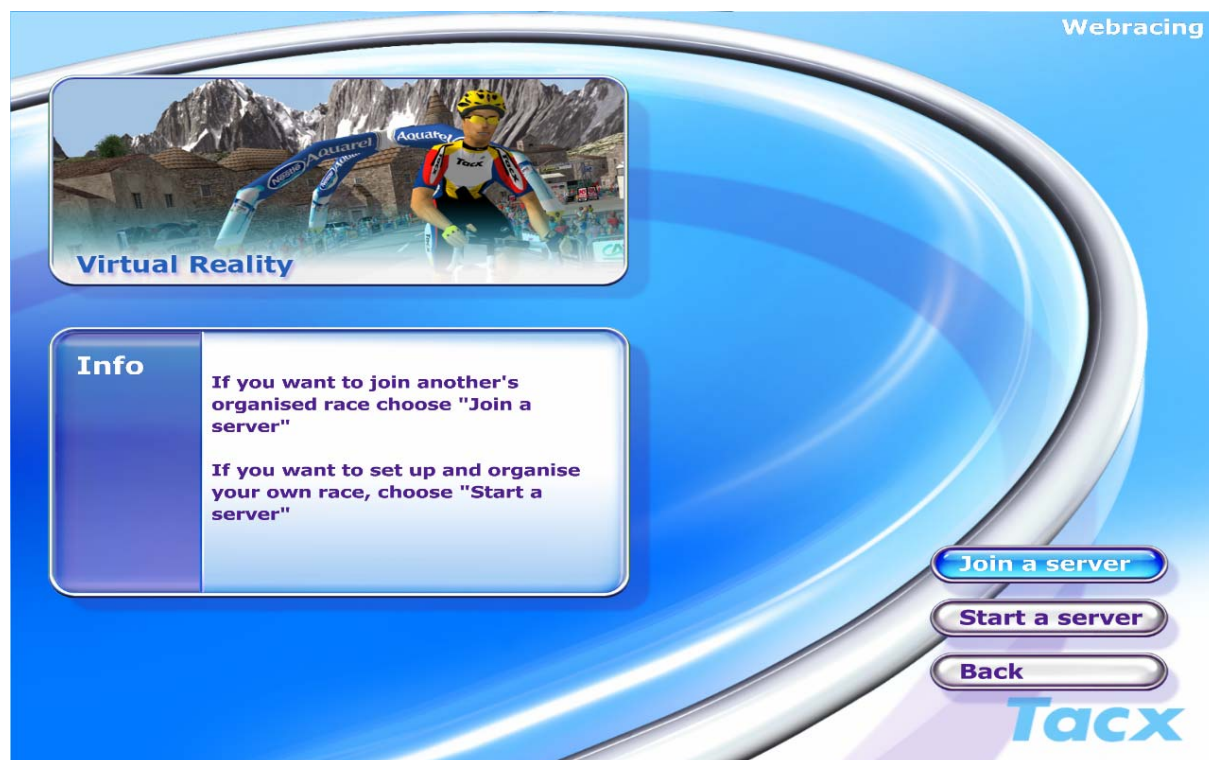
The Tacx Multiplayer software works the same as most online games. If you want to host a server, you need to create a private network with other players. You are then called the *Host* or the *Owner* of the server/game.

To achieve this you need to open the communication between the players/riders and yourself. The router is standard secured and all communication between other PC's and your PC is blocked. You need to open this communication and grant other players access to communicate with your PC.

We will explain in detail what you must do.

#### Remark

If you only choose to Join servers instead of creating one, then it is not necessary to change the settings of the Router. When you select "START A SERVER", you are creating a server in this instance and it is mandatory to change the settings in the Router.



## 2.2 Changing settings to the Router

### There are 2 steps to take (XP or Vista)

1. You need the IP address of the PC. You have to follow below procedure

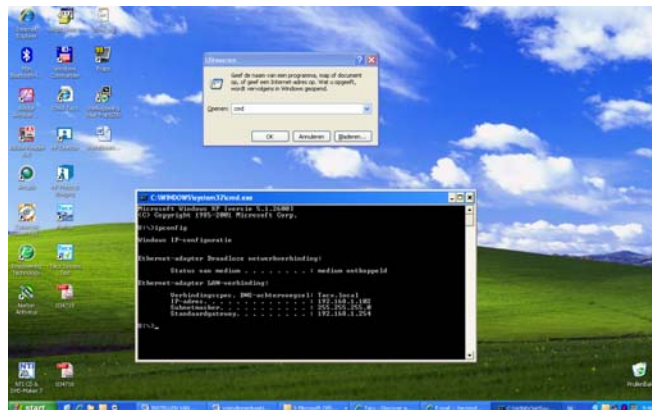
Go to

- **Start**
- **Run (XP)**
- **Start a search (Vista)**

Type in **CMD**

A black screen will appear. Now type in

→ **Ipconfig**



On the first line you will see you IP address. Note down this number (in the example it is **192.168.1.102**)

If you work Wireless, then there is a possibility that you have a different IP address compared with your fixed network (or it can change)

- 2 The next step is to open the Router Program screen. If you have a wireless router, then you should have done this in the past to protect your communication. Take the manual of the Router /Modem and check how you are able to log-in to your router. Each router has a different instruction of log-in.

If you can't locate your router manual then there is information available on the net for all routers. Check the following site for details on most router installation.

<http://portforward.com/english/routers/>

### ***“Linksys” Router***

Open your internet browser. Then type in were you normally type [www.tacxvr.com](http://www.tacxvr.com) the following address (this can be different from each router): <http://192.168.1.1>

Now you need to log-in. This is a standard login code and password. It is possible that you have changed this in the past.

#### Example

Login: admin or user  
Password: admin



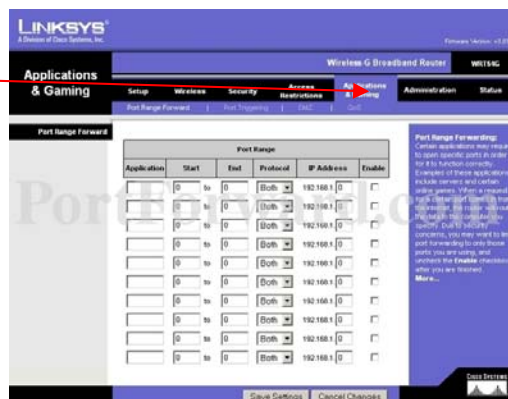
Once you are logged in, it is sometimes necessary to open something in you Security section (example **Block Anonymous Internet Requests**)

Go to Application and Gaming.

NB Application and Games could be termed different names depending on router.

Firewall settings  
Application and Gaming  
Port Forwarding  
NAT Virtual Servers

Again, this is different for each router



## Overview

**Application:** You can type in here a name (example: Fortius Multiplayer)

**Start Port:** starting value fill in **5000**

**End Port:** this is the last port fill in **5005**

Now 6 ports are open. It is not possible to open just one. You need to open at least 2 ports (Example 5002 and 5003). You always need a start + 1 for the communication.

**IP address:** **192.168.1.102**

This is the IP address the we found in the First Chapter (with IP Config, point 1).

**Protocol:** **BOTH**

Always select both protocols **TPC** en **UDP**.

If it is not possible to select both protocols at the same time, then you must open the ports 2 times. One with protocol TPC and one with protocol UDP

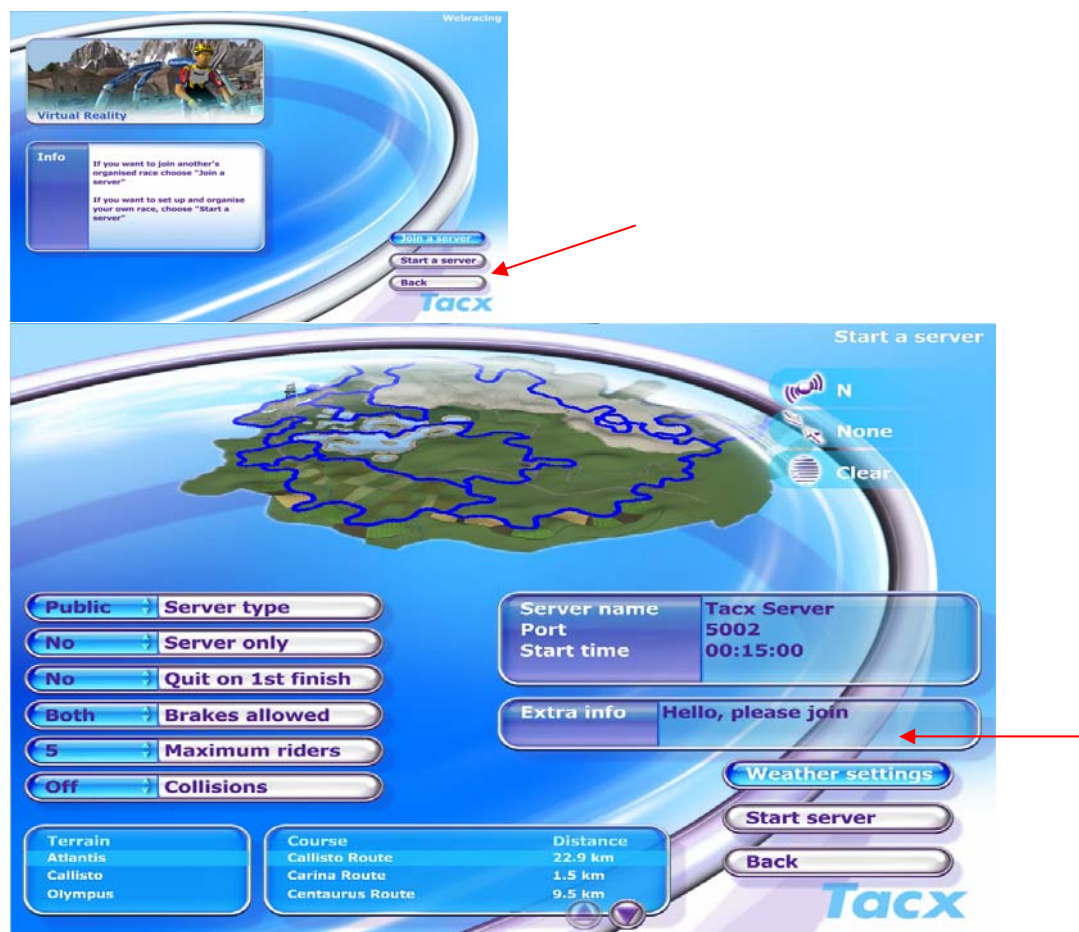
If you use 2 routers, then you have to do the procedure with both routers. Always fill in the IP address of you PC in both routers otherwise the communication will halt at one of the Routers.

### 3. Start a Server

*First follow the instruction in Chapter 1*

Start the Fortius Program and select “Multiplayer” -> “start a server” (via Multiplayer-Webracing – next – Virtual Reality [of Real Live Video; Catalyst]).

See the “Multiplayer Manual” for more information on the registration card



When started up, you will see above screen. You can fill in the following

**Server name:** You can name your server. Other riders will see this name.

**Port:** fill in **5002** (if you filled in **5000-5005** in your router settings, then you can also fill in 5000; 5001,5002,5003 or 5004. **Fill in only ONE number.** 5005 is not possible, because we always need one extra port for communication)

**Start Time:** Time when the server starts up (also possible to do this manually).

**Extra info:** Fill in additional information.

The other information is viewed in the Fortius Manual.  
Now start the server.

#### Remark

It is possible that the factory router settings are on dynamic IP addressing. This means that each time you start up your PC and you're connected to the internet your Router will grant you a different IP address (this happened each time). When your home network consist of more PC, then it is possible that you will get a different IP each time you start up your PC.

For more information the "DHCP Reservations" or "Static IP Settings" in the manual of your router.

If you connected Wireless (it is possible to do Webracing wireless depending on how strong the signal is) then you will get a different IP address compared with when you use a fixed connection. Open both IP addresses in your router. **Keep in mind that we do NOT advise you to use Wireless Internet, because there is a risk of data package lost.**

It is also possible to make a fixed IP address for your PC. Please check Chapter 4 for more information.

## 4. Settings for LAN Racing

LAN Racing means that you do not use Internet to cycle against each other, but make a network with another PC (connecting the PC with each other). This connection is done by a switch or a hub)

You connect the PC with a network cable to the switch, see example below:



It is possible to connect Fortius and I-Magic with each other. So you can connect 3 Fortius and 3 i-Magic trainers.

### 4.1 Firewall settings

It is the same procedure as with Webracing. The 3 programs have to be activated in the Windows Firewall or you can shut down the Firewall (because it is a closed network).

### 4.2 IP settings on the PC (XP version)

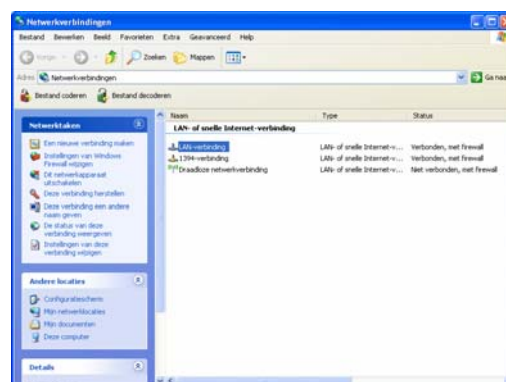
Go to

- **Start**
- **Settings**
- **Network connection**

Select: **LAN settings** with your right mouse button

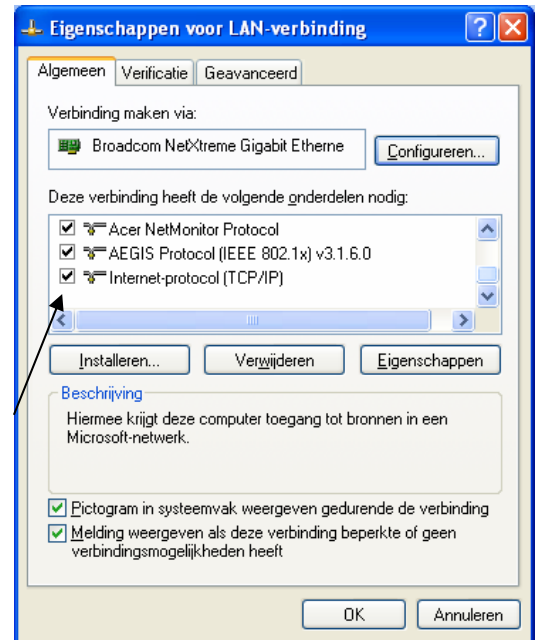
Select: **Properties**

Now you will get a view of your LAN settings

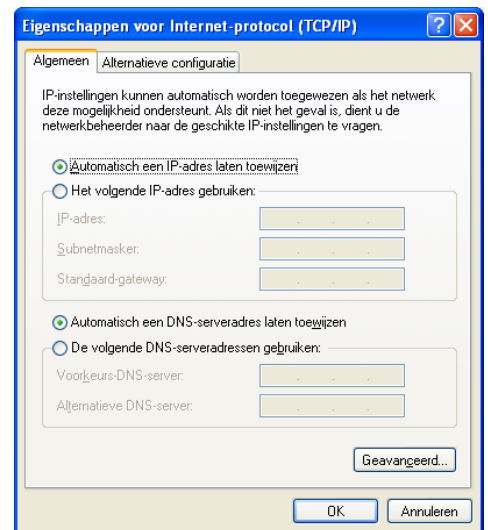


Now you will get a view of you LAN settings  
 Scroll down with the mouse on the selection field

Select: **Internet-Protocol** (TCP/IP).  
 Select: **Properties**



The following screen will appear. With standard settings the IP address says : Automatic. This means that the IP address is automatic generated (by the router if you have one). If we use a switch, then we have to make it manual.  
 Select: **Use the following IP-Address**



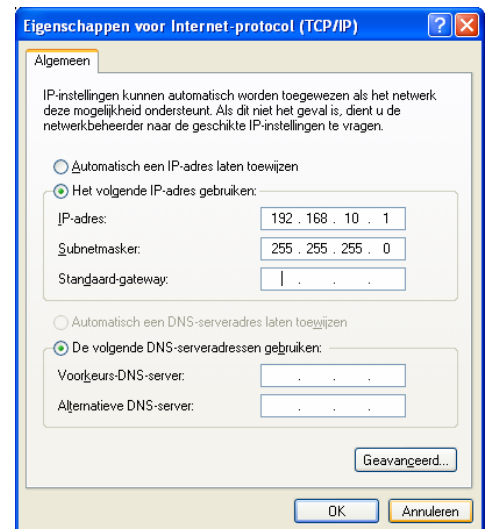
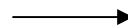
Then fill in the following (see example)

**IP address: 192.168.10.1**  
**Subnetmask: 255.255.255.0**

In most cases subnet is filled in automatically.

For the 2<sup>e</sup> PC you need to change the following

**IP address: 192.168.10.2**  
**Subnetmask: 255.255.255.0**



For the 3<sup>e</sup> PC you fill in IP Address **192.168.10.3** in. You can repeat this process up to 6 PC.

## Start the LAN Connection

So, now we start up the LAN connection. Start the Fortius Program and go to Multiplayer



Choose the LAN racing (in stead of the Webracing)

It is very important that you ALWAYS use **PORT number 7328**  
Otherwise the server will not be recognized.

Now start the server.

### **4.3 Important**

1. You can activate the LAN option by purchasing the one year Multiplayer license. Once activated you can use LAN Racing as often as you like.
2. Each PC needs to have an activate Multiplayer license to work. The USB interface is the unique identifier. You can use the USB interface on different PC's.
3. It is not possible to combine LAN and Webracing.

## General Information

- Maximum riders is six for both LAN and Webracing
- It is not possible to connect two Fortius/i-Magic systems to one PC.
- Fortius and i-Magic races can race against one another.
- The Fortius and i-Magic trainer use the SAME software. The difference is in the motorbrake.
- It is not possible to use a headset during the ride.
- Internet Speed: We advise to use 4 Mb download and a minimum of 512 Kb Upload (faster is better). It is possible to use lower speeds, but there is a chance that you will be automatically disconnected due to bad a connection.
- Get a FREE four week Multiplayer Trial when the software is downloaded for the first time. (This free trail will go on after the registration is done).
- Attempting to extend the trial period by downloading again will not work.

### PC Specification (minimum recommendations)

- P4 3 GHz
- 256 Mb Graphics Card (Direct X 9 compatible, stand alone card, not integrated)
- 512 Mb Memory (Vista minimum 1 GHz Memory)
- USB Port
- Internet Connection (Cable or ADSL with a min of 4 Mb download and 512 Mb upload)
- Soundcard

### Remark Graphics Card

- 128 Mb is not a problem for Real Life Video and Catalyst Software. The first versions of a 128 Mb Graphical card might have problems on the Virtual Reality (with he Xtreme MTB). As a precaution, always have your latest Graphics drivers installed.
- We do not advise you to use graphical cards with shared memory, however some late model PC's have 512 Mb shared memory and may work. Please ensure you have the proper hardware.